



***KEWATEC***  
SHIPYARDS

***Company Presentation***

***High-Performance  
Aluminium Boats  
for Professionals***

We have produced hundreds of boats -  
all designed for professional use.



*Fire Fighting & Oil Recovery*



*Work & Survey*



*Fast Patrol*



*Pilot & Crew Transfer*



*Search & Rescue*



*Defence & Patrol*



*Passenger*



*Fishing & Aquaculture*

## Our Story

Oy Kewatec AluBoat Ab began its operations in 1998. The founder of the Company, Karl-Erik Wargh, is an experienced professional who has worked with boats since the late 1970s. His previous company, Alumina Varvet, developed through multiple phases from an aluminum boat building company to a high-tech water jet propulsion manufacturer – today owned by Kongsberg. Both companies are still located in Kokkola, on the west coast of Finland.

As of January 1st, Kewatec has merged with Weldmec Marine Ltd and continues to serve its customers from locations in Porvoo and Kokkola as Kewatec Shipyards. Weldmec's history similarly goes back over two decades and the combination of these two separately developed professional units in the boating industry provides solid know-how and a wide product range.

Kewatec's in-house design team has designed, and the production has delivered hundreds of vessels in aluminum. Today, there are over 100 different standard models which can easily be modified to a customer's specific need. The product groups include patrol boats, SAR boats, workboats for a variety of duties, passenger boats, firefighting & oil recovery boats, pilot boats, and fishing & aquaculture boats – all designed for rough use in a variety of maritime environments.

The staff consists of experienced professionals who are passionate about what they do. A large majority regularly leave the office after the day to continue the day out at sea enjoying leisure boating and fishing. Kewatec is headquartered in Kokkola, Ostrobothnia, with its long history and wide professional network in boatbuilding, on the western coast of Finland.



Karl-Erik Wargh

## Certificates

Kewatec meets the requirements of standards ISO 9001, ISO 14001, ISO 45001, and ISO 3834-2 (quality requirements for fusion welding of metallic materials).

The AQAP2110 (NATO) standard has been applied to the entire company during 2021.



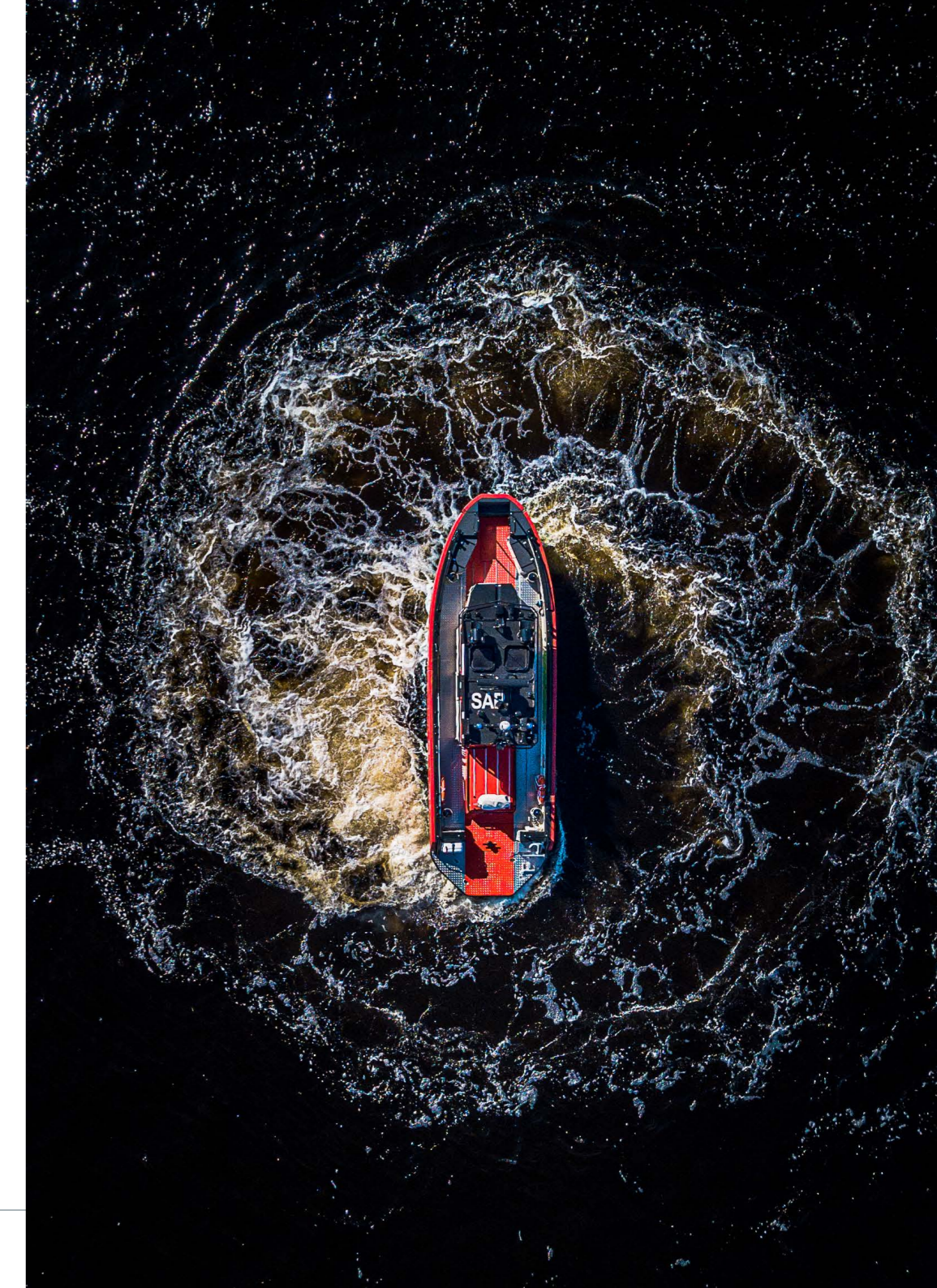


## *Customer-oriented top quality*

The basis of our operations is a hands-on experience of boating, strong know-how in the design of boats and systems, and robust project management. Around this, we have built a functional process, allowing our customers to receive a well-finished and reliable vessel to meet even their most demanding needs.

Our operations are driven by the values of our Company: openness, integrity, and total liability. Today, Kewatec is one of the leading manufacturers of aluminum boats, employing over 100 people. We design the boats mainly by ourselves, using modern design, modeling, and simulation software. Our mode of operation ensures that we consider our customers' needs right from the tender and preliminary planning stages.

Our staff is continuously working to improve the efficiency and quality in all areas of our Company from production to delivery. In addition to the quality of our work, we also invest in constant product development with a focus on new technologies and environmental sustainability.



## ***Overall service***

We produce tailored solutions reliably to meet challenging conditions and tough use. We build cost-effective and practical tools for our customers, ensuring long-life products. By putting a lot of effort into engineering, we have created boats of high user comfort and ergonomics with extremely low noise levels and vibrations as well as optimal fuel consumption.

Together with our skilled staff and reliable subcontractors, we work to fulfill even the most demanding customer requirements. Our location in the traditional core area of the Finnish boat building, Central Ostrobothnia, guarantees that we are surrounded by a strong network of skillful professionals who know the demands and requirements of seafaring and can meet customers' various needs.

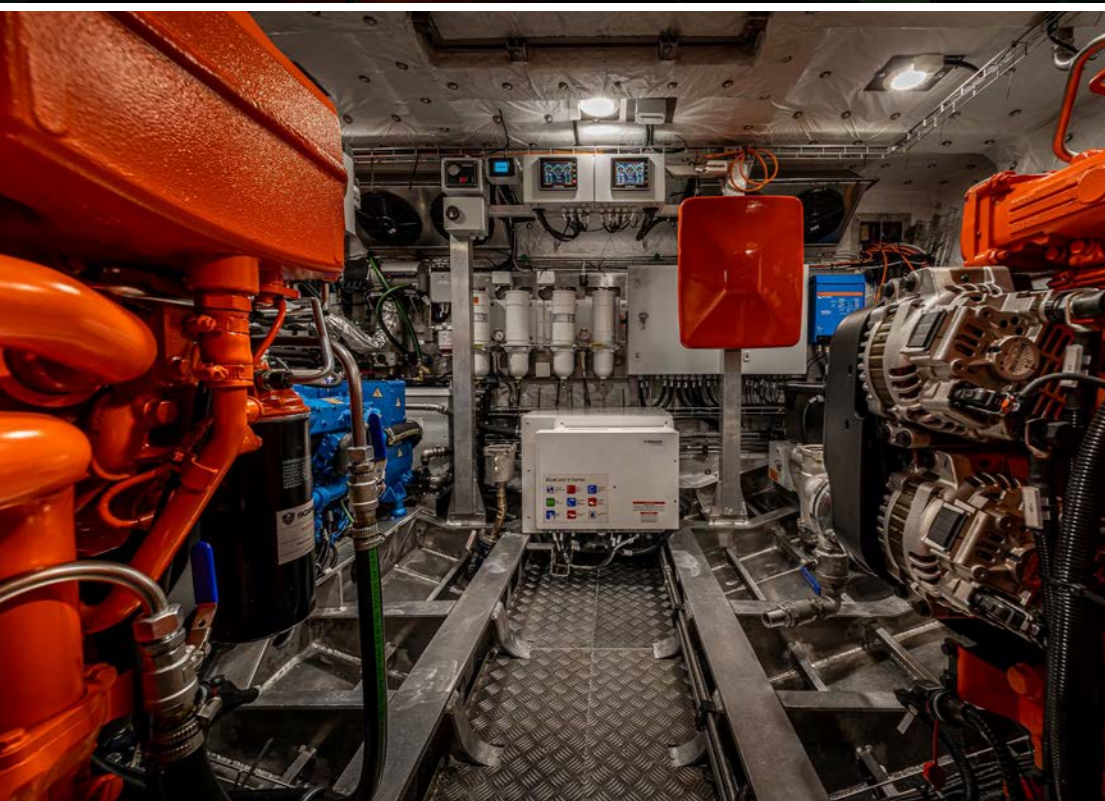


## Hull & Cabin

An active dialog with the customer is the basis of setting out design targets. When designing the hull and cabin, we take the customer's wishes and class/certification regulations into consideration already at the preliminary planning stage when making the first draft of the boat. After this, weight, performance, strength, stability, as well as other necessary calculations, are performed based on the preliminary plan. Alternatively, for a lighter process, an existing design can be chosen.

In the design, we carefully analyze the intended use of the boat, the local rules, and regulations of the end destination of the boat, and the planned maritime area. When all these components are combined into a package, we end up with an optimized combination of features that fulfills both the requirements of regulative authorities and the expectations of the customer.





## *Interior*

When designing the interior, the customer's wishes are considered while observing the intended use of the boat. We strive to take each activity and task performed with the boat into account at as early a stage as possible, ensuring that the result will be a practical and functional boat where all the necessary elements are in their right places.

The choices on the surfaces and materials to be used, made in close cooperation with the customer, are aimed at reaching a lightweight as well as an aesthetically pleasing environment.

Ergonomic is further enhanced by the carefully designed cabin, which we have managed to make exceptionally quiet with a sound level of typically less than 65dB. The low sound level, low vibrations, and high comfort level are among the main reasons why customers repeatedly select Kewatec boats.







## *Systems*

When choosing the propulsion type, the applicable drive profile and speed characteristics are considered. Combined with the best possible engine type for the hull structure we ensure the optimal economy and efficiency.

The boat's intended use determines which systems and equipment are the best to achieve a practical and functional combination, right from the selection of components where durability and functionality are a priority. Another important factor is to secure the Electro-Magnetic Environment to minimize risks of interference. In addition to the use of quality materials, our boats are audited by Kewatec's detailed quality control system, verifying that an excellent quality boat package is delivered.

## Competence

### **Aluminum know-how - A strong foundation for building aluminum boats**

Strong know-how in aluminum is at the core of Kewatec's operations. Aluminum is a light and carefree material when compared with steel structures. When correctly assembled and handled, aluminum is virtually corrosion-proof.

Boats with aluminum hulls can carry heavier loads due to their lightweight. The lightweight also enables the achievement of faster speeds as well as lower fuel consumption.

Due to the production material, when necessary, modifications to the hull and cabin can be done relatively easily and quickly. In addition, the 100% recyclability of the hull material at the end of the life cycle of the boats, is one of our environmental awareness factors.

### **Skilled employees - Investing in education is the key component**

Our personnel is constantly trained and certified to ensure continuous improvement. As a result of education and knowledge, we are constantly increasing personal motivation as well as improving process quality.

Therefore, we invest in our employees' expertise and skills by providing them with precisely designed training and developing practical work.

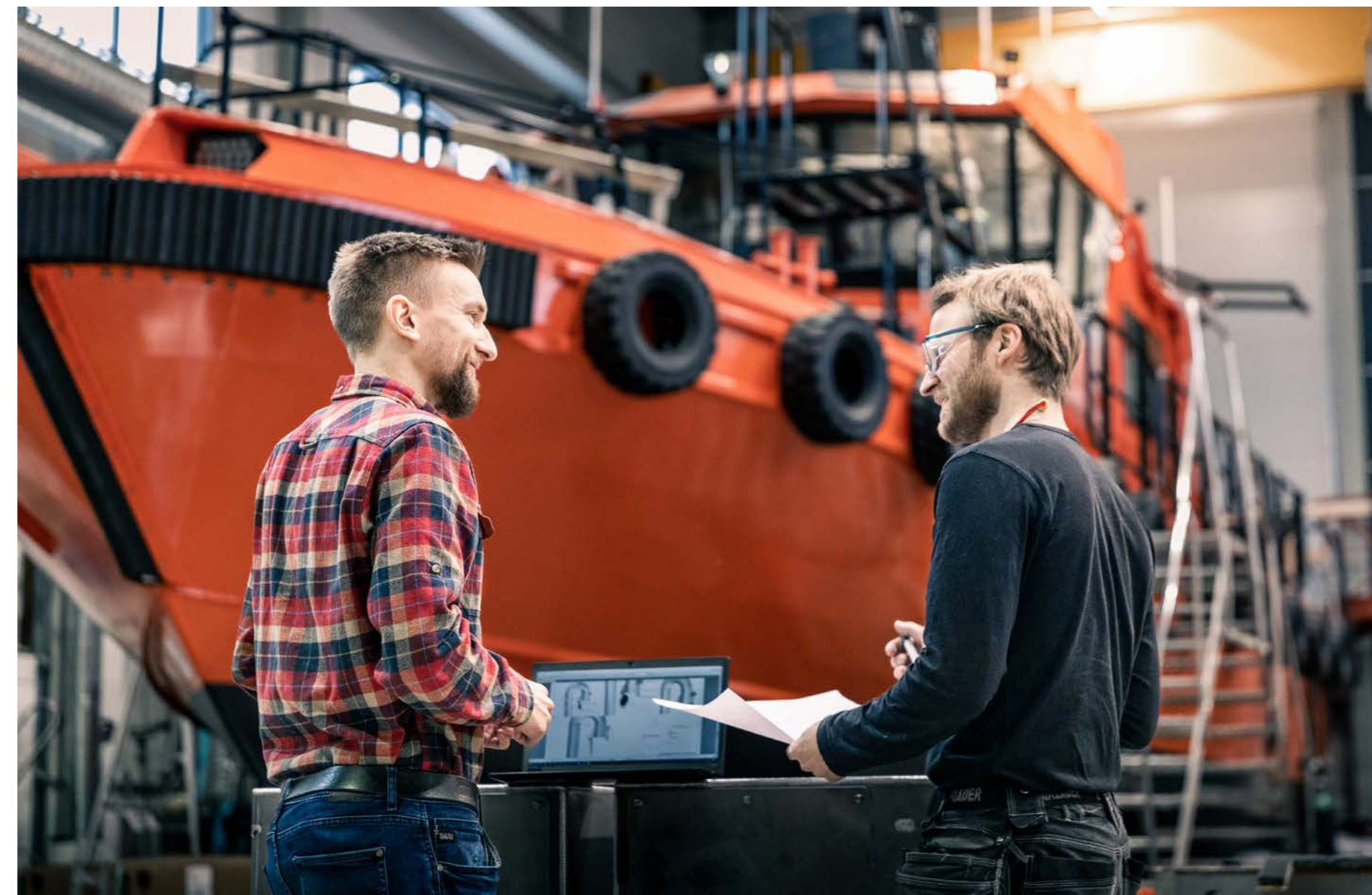
### **Safety and comfort**

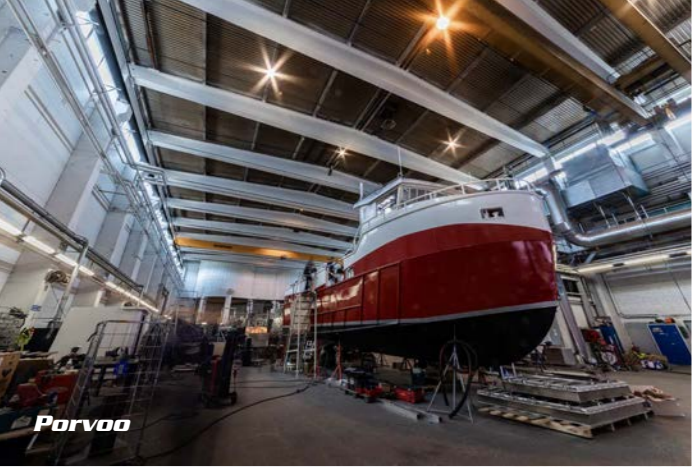
Crew safety and comfort are our top priorities. The Kewatec boat range includes self-righting models and comfortable, ergonomic cabins and crew accommodation. We want to guarantee the crew a safe, reliable, and comfortable stay both at sea and in port.

Working comfort on board is further enhanced by the low sound level of Kewatec boats, which has been achieved by resiliently mounted wheelhouses, isolated from the hull by elastic structures.

### **Networking - Ostrobothnian maritime network forms a base for flexibility with superior quality**

Most Finnish boats are made in Ostrobothnia and about 75% of them are exported. The number of companies related to boat design and production is huge: part manufacturers, sub-suppliers, design offices, and specialized maritime expertise. Being an active part of this network has been one of the reasons for Kewatec's success.





## Capacity, equipment, and premises, totaling 8740 m<sup>2</sup> the covered production area for high performance professional boats

**Kokkola** has its hull production for aluminum hulls in modern premises, where over 20 welders work, all are certified, welders. Everyone has access to the latest Fronius welding machines. We have our engine installers, electrical installers, plumbers, and hydraulic installers. In Kokkola, we have an internal design and engineering team consisting of 10 engineers and marine architects. The aluminum skills of engineers, welders, and mechanical installers are the result of continuous training and a long history of building different types of aluminum boats.

In **Kälviä**, near Kokkola, Kewatec manufactures hulls for the boats.

The production team in **Porvoo** consists of approx. 20 own key people and a large number of strategic partners, all with their special key competencies. Usually, a total of 40-50 people work with different workboat projects, and even here

calibrated Fronius welding machines are used. The work is mainly performed by certified welders, technicians for mechanical installations, electricians, hydraulic experts, and interior technicians/carpenters.

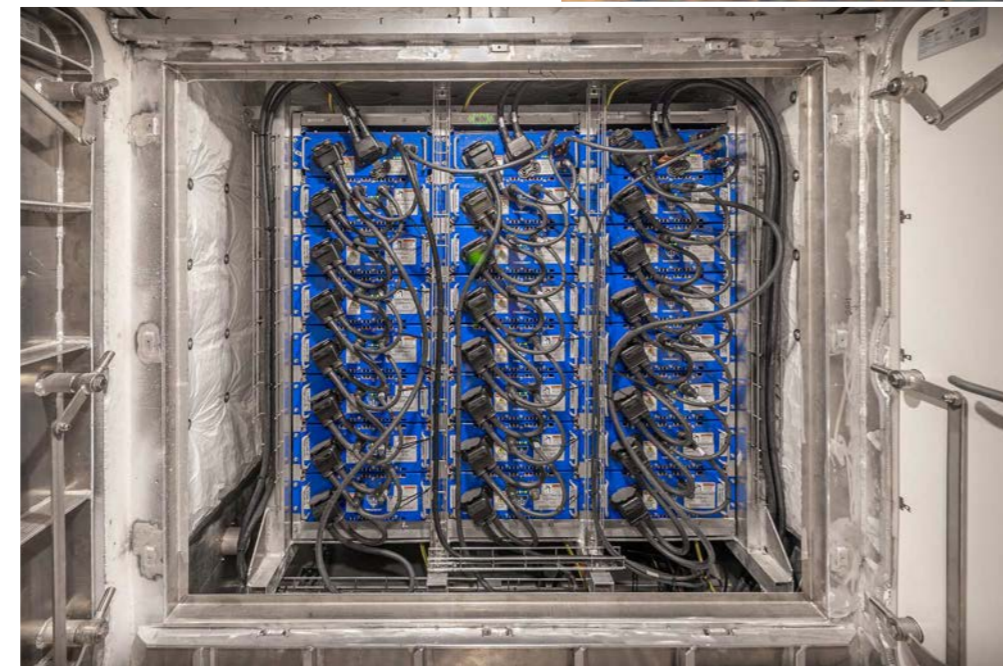
All our key people have an extensive individual boat and ship experience. Our heated production facilities are by the sea and are purposefully built. Launchings and test drives can be carried out easily in the vicinity of our premises. The extensive outdoor spaces enable efficient boat handling.

**Martec** is a subsidiary (67%) of Oy Kewatec Aluboot Ab based in **Bergen, Norway**. Martec sells professional commercial vessels and sales of marine engines and other marine equipment to the professional market. Martec also handles service and repair in collaboration with selected partners.

## Hybrid and electrical solutions

Kewatec has invested profoundly in sustainability and the development of hybrid and fully electric propulsion systems. Several hybrid-powered boats are either in process or have been delivered to satisfied customers.

The first fully electric solutions are on the design board and Kewatec has engaged in a customer project for developing a hydrogen-fueled vessel.

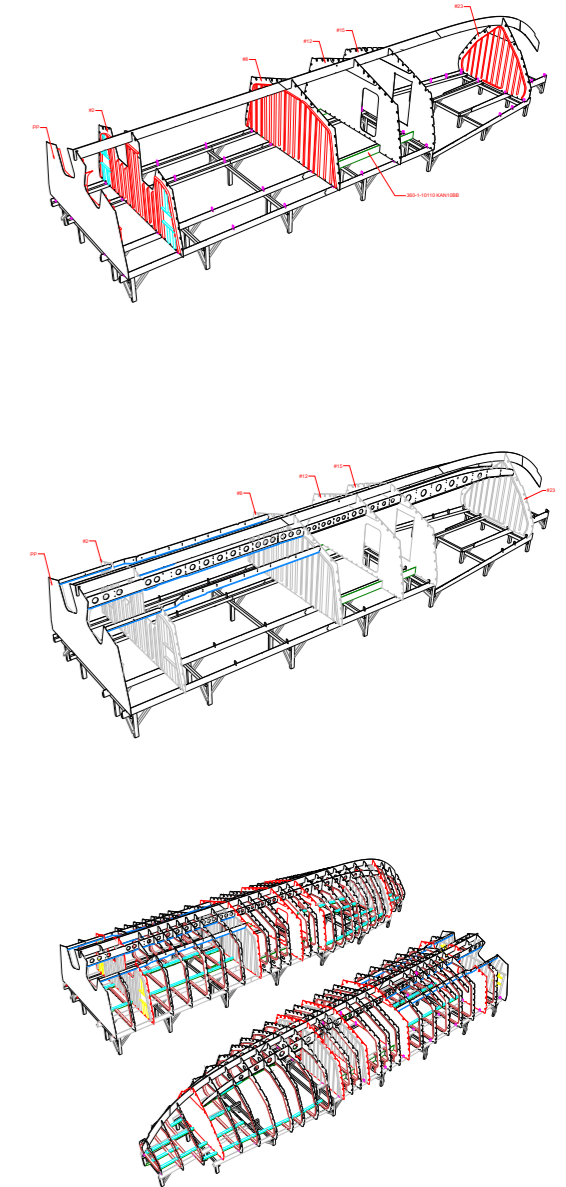
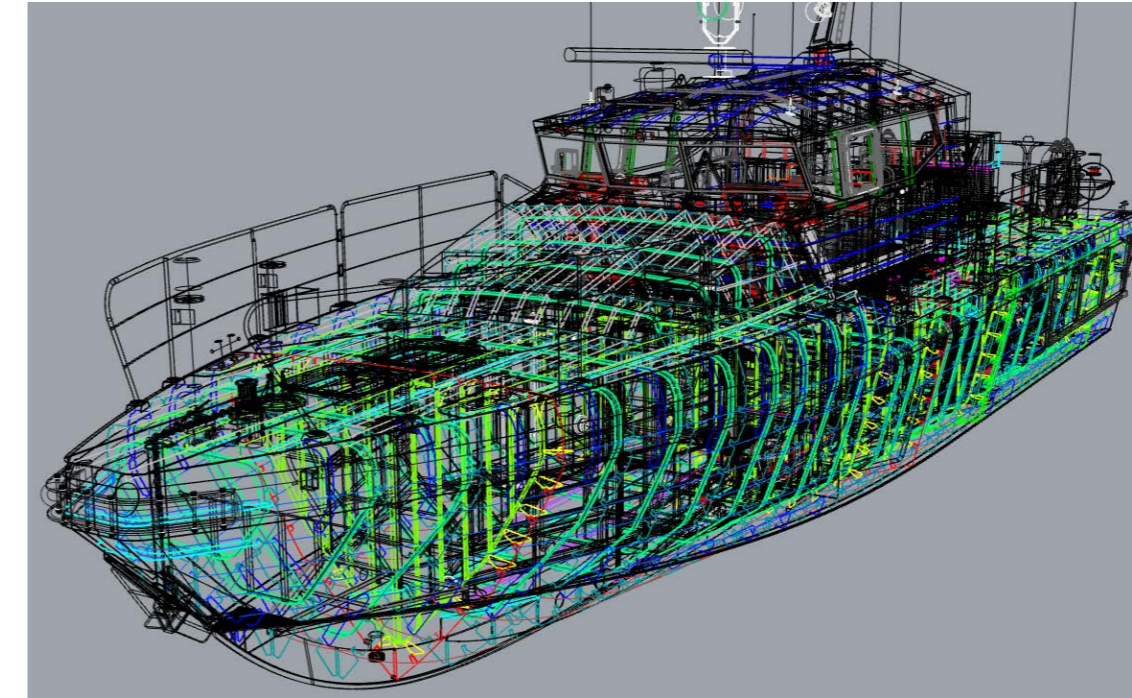
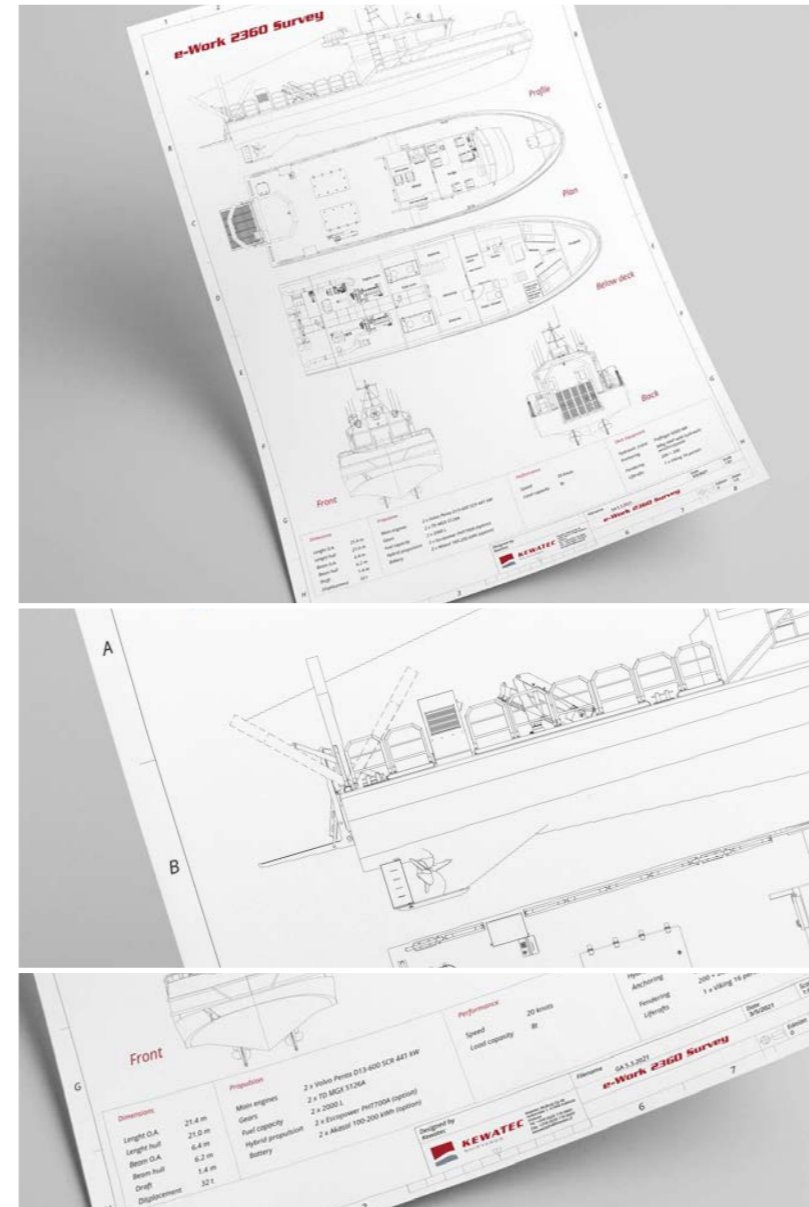


A hybrid boat e-Work 2390 Survey

## Design department

Kewatec's in-house naval engineering department covers all design phases from concept and basic design to detail design. CFD analyses, stability calculations, and propulsion metrics are performed for each boat and guarantee design capability, performance, and sustainable lifecycle costs.

Intense cooperation with national regulation boards and Classification Societies (IACS members) guarantee safety and compliance.



## After Sales

We have over 20 years of experience in planning and constructing boats for professional use. When it comes to services, our staff will assist you with everything from service and repair to consulting on spare parts.

Kewatec, with its in-house experts, has a broad experience of building boats and therefore also many years of knowledge within services. It doesn't make a difference, whether the service is performed where your boat is located or in our workshop. The choice is yours.

We offer:

- Service and Repair
- Docking and Winter Storage
- Upgrading engines and drivelines
- Modernization and refit
- Spare parts and accessories



## **Locations and deliveries**

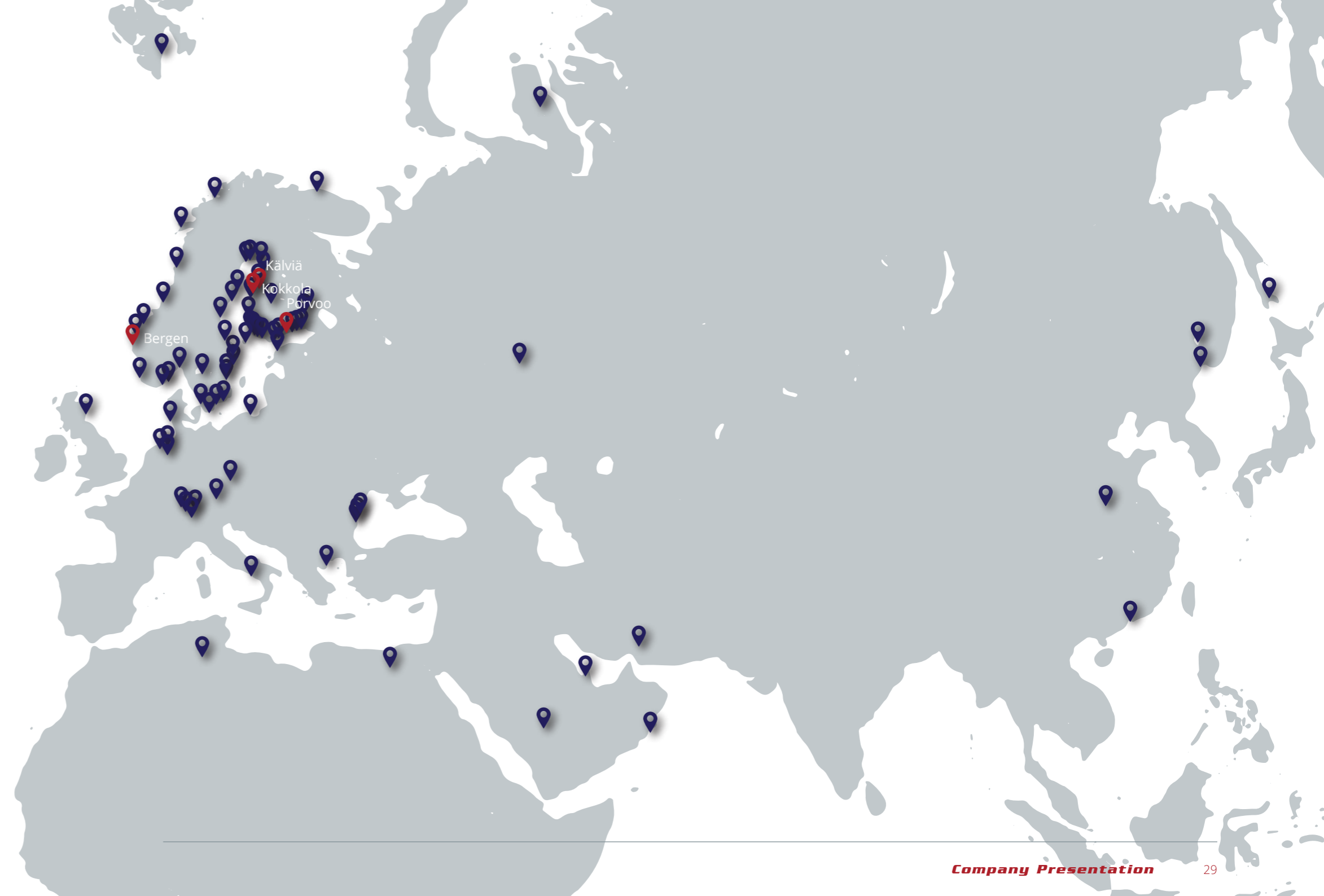
Kewatec is headquartered in Kokkola and has operations in Porvoo, Bergen, and Kälviä. In Kälviä, near Kokkola, Kewatec manufactures hulls for aluminum boats.

Kewatec's facilities are strategically selected, based on the sea to do launching and boat testing as conveniently as possible. In Porvoo, the facilities are optimal for the production of boats over 25 m.

Items marked in red are our locations.

We have delivered hundreds of professional boats to various authorities and on the map next in blue you will see a few places where we have delivered our boats.

Kewatec is global but local: local partners serve our customers on a long-term basis around the world.









## **Oy Kewatec AluBoat Ab**

### ***Kokkola, Head Office***

*Isokarintie 1  
FI-67900 Kokkola*

### ***Porvoo***

*Tolkkisten satamatie 5  
FI-06750 Tolkkinen*

### ***Kälviä***

*Kasikulmantie 2  
FI-68300 Kälviä*

### ***Bergen***

*Martec AS, Sjødalsvegen 20  
NO-5305 Florvåg*

*Tel. +358 (0) 207 780 660  
sales@kewatec.fi*

*Oy Kewatec AluBoat Ab  
Business ID: FI19884459*

***www.kewatec.fi***